




# Beauty Is Skin Deep

David N. Menton, Ph.D



I would like to personally thank you for watching the Origins program. Origins was a special program, near to the heart of my late husband, Russell Bixler.

I trust that the information in this presentation will be helpful in your study of creation science. Thank you for your prayerful and financial support of Origins... you're making the television production of this program possible.



-Norma Bixler

**Beauty Is  
Skin  
Deep**  
**Elements of Skin**

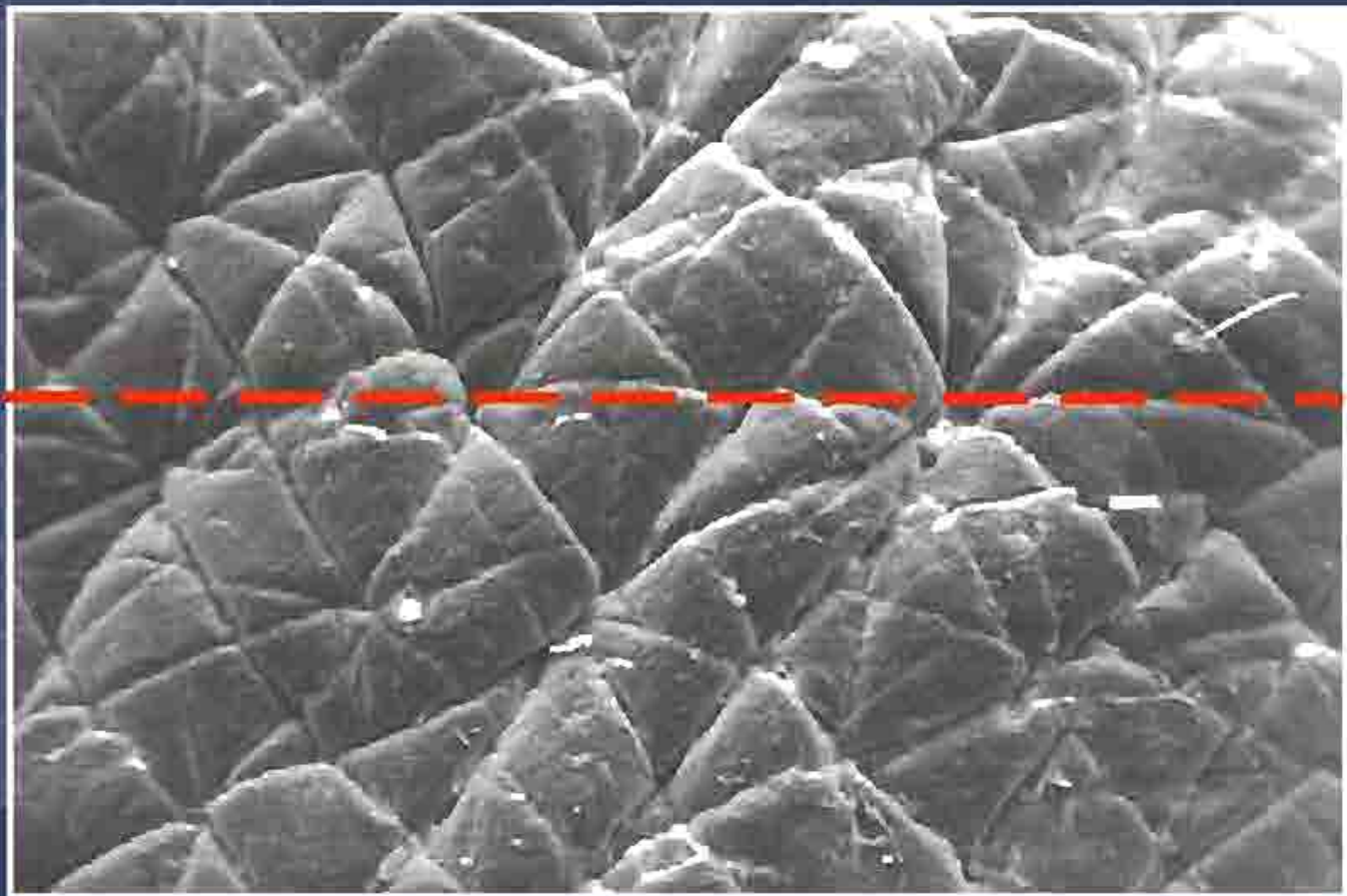


Beauty Is  
Skin  
Deep

Elements of Skin



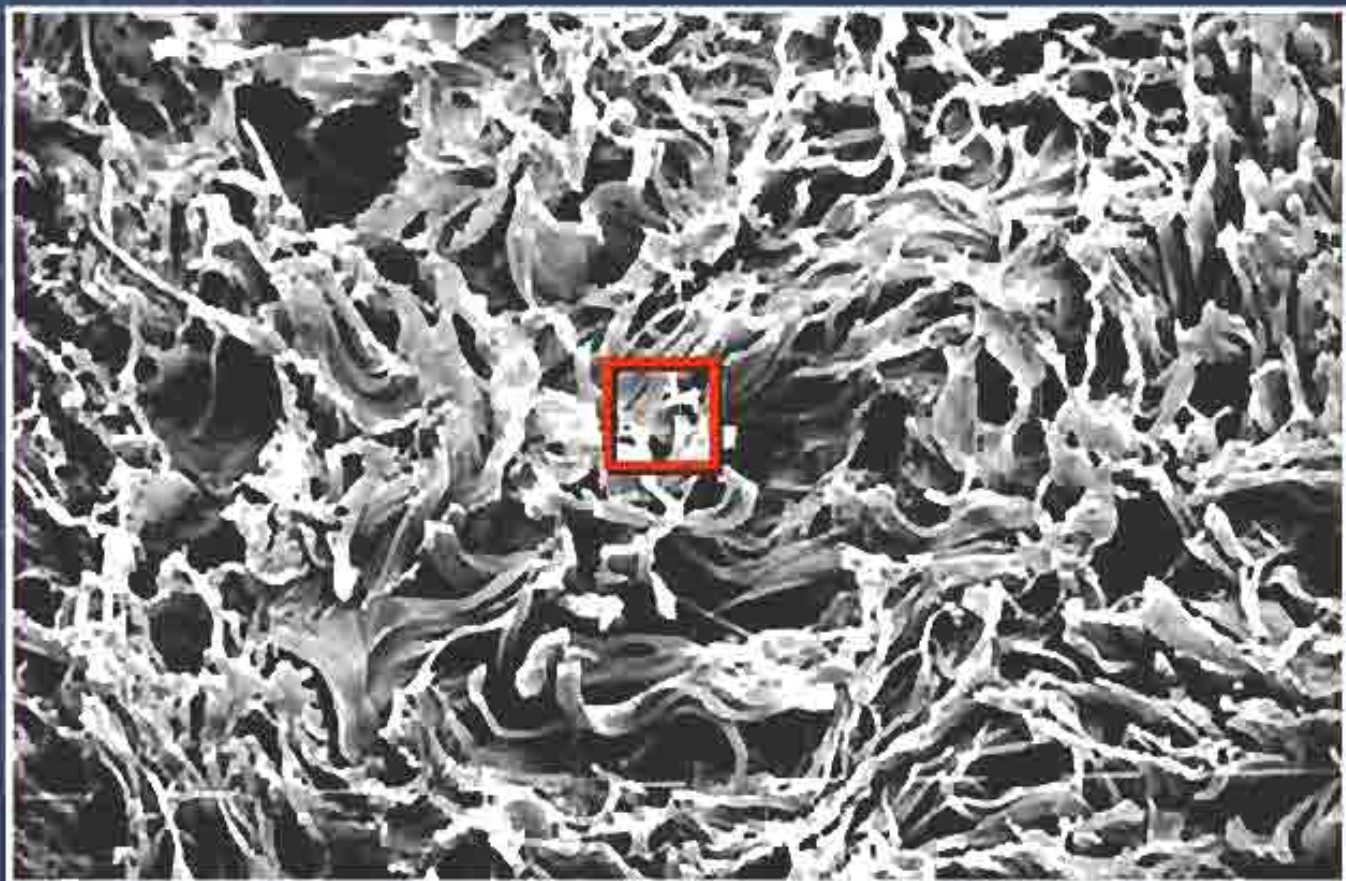
## Skin Surface



Beauty Is  
Skin  
Deep  
Elements of Skin

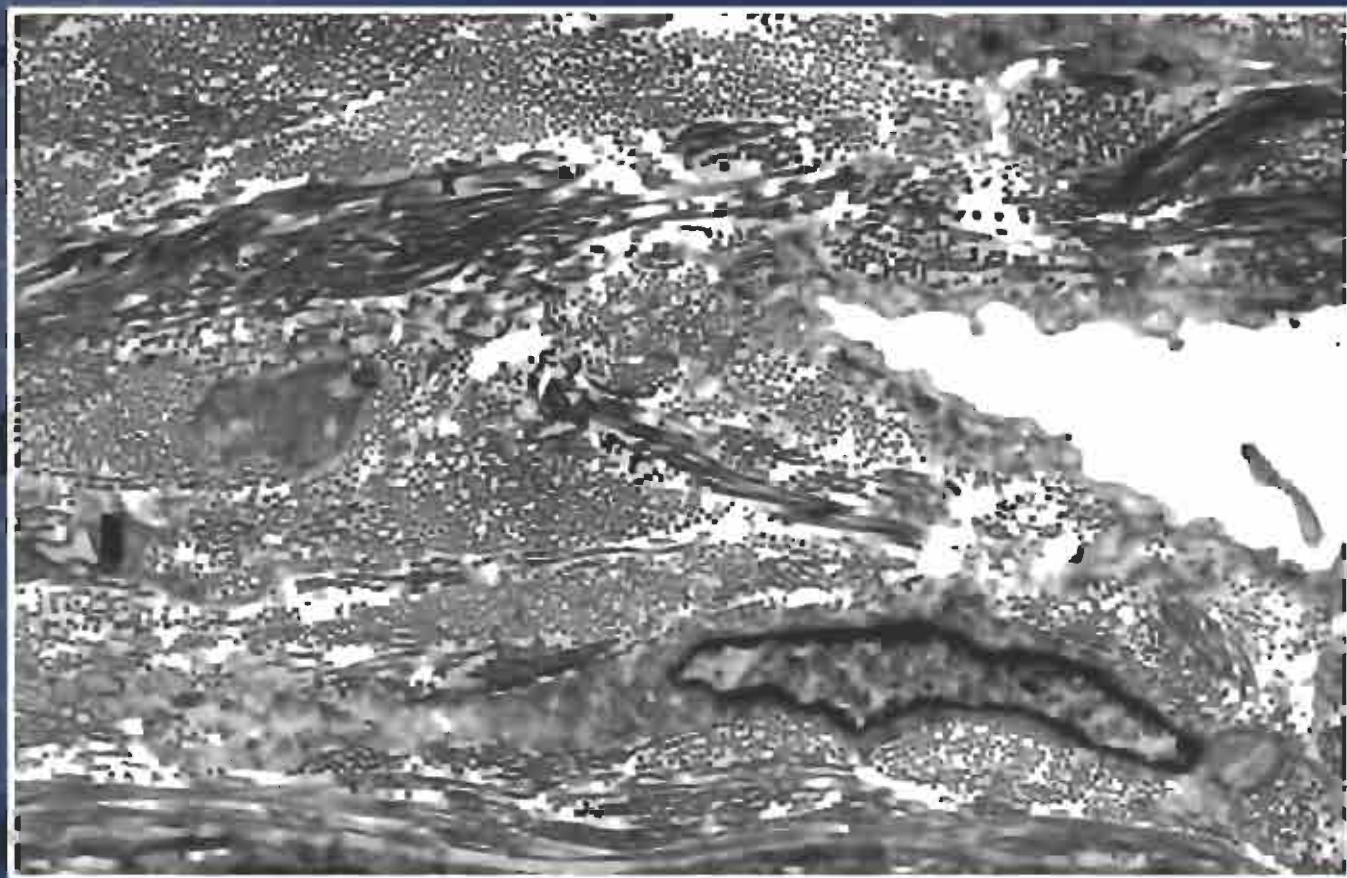


## Collagen Fibers



Beauty Is  
Skin  
Deep  
Elements of Skin

## Collagen Fibers and Fibrils

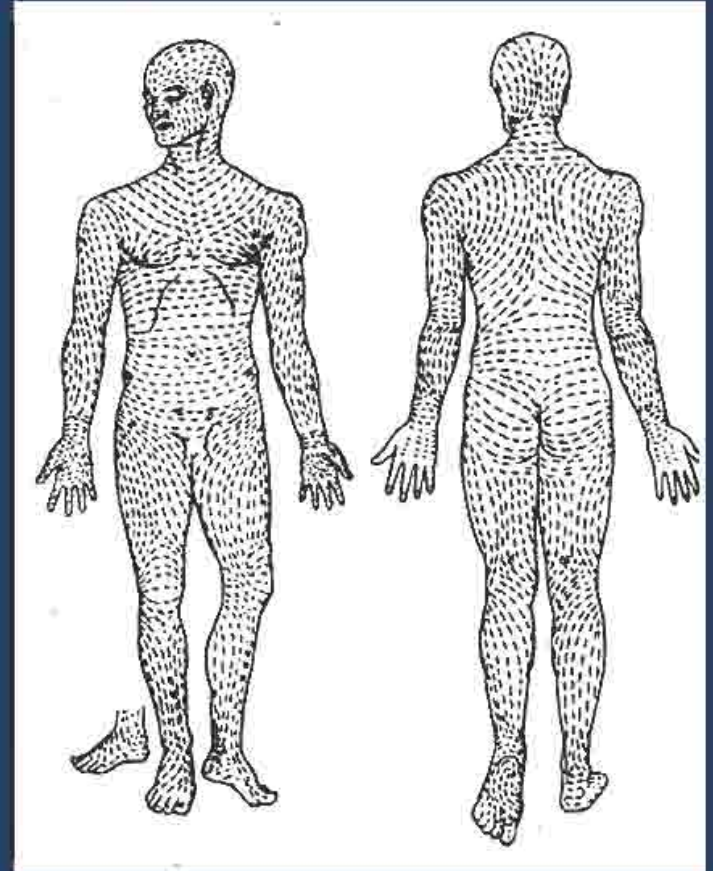
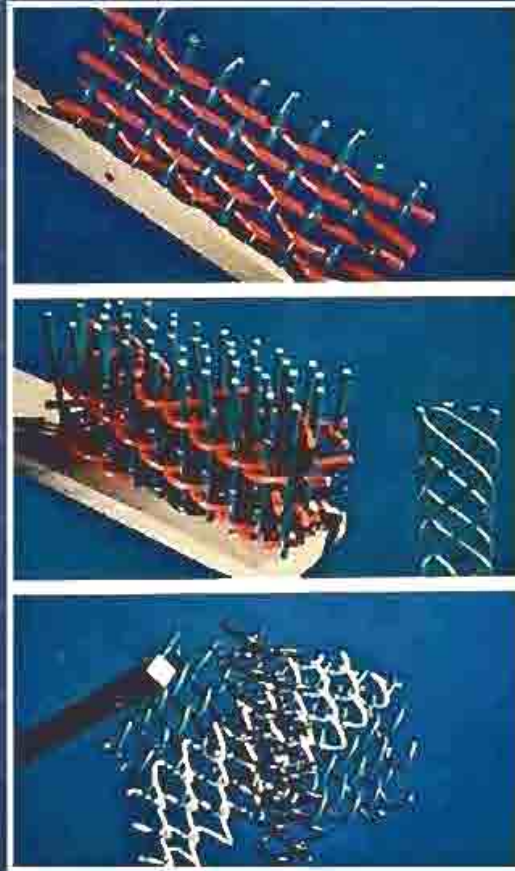


Beauty Is  
Skin  
Deep  
Elements of Skin

# Collagen Fiber Weave

Montagna  
et al *The  
Dermis*  
1968

Beauty Is  
Skin  
Deep  
Elements of Skin







## We Are Woven By God

*“For You formed my inward parts;  
You wove me in my mother's womb.*

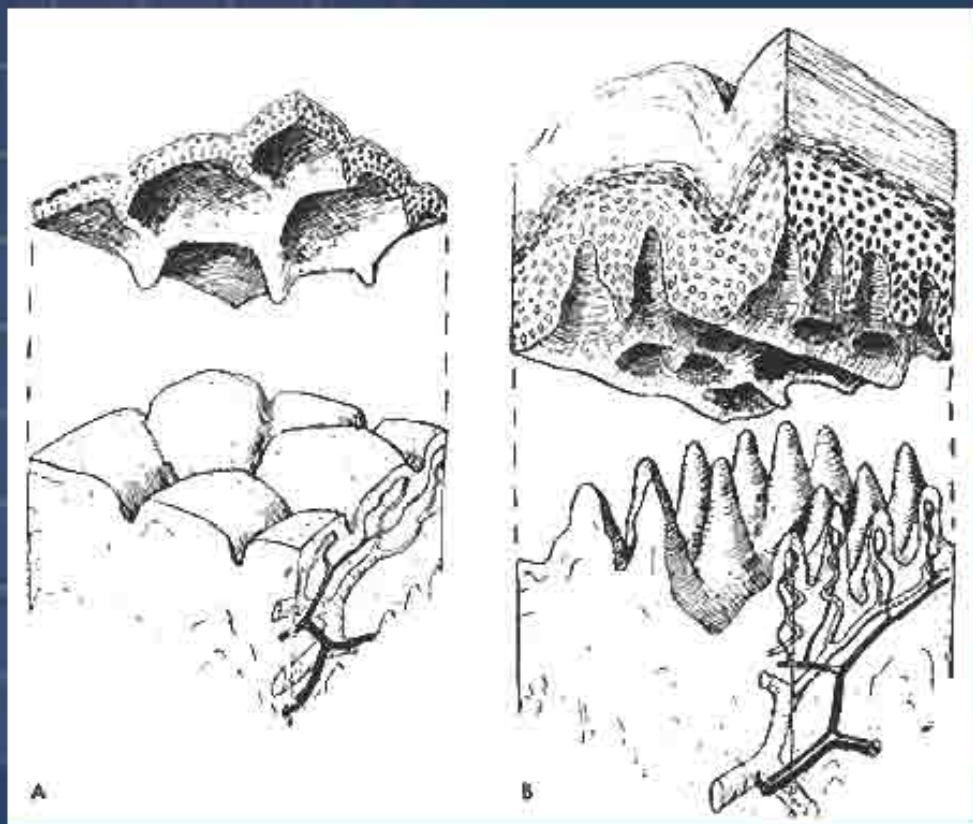
*I will give thanks to You, for I am  
fearfully and wonderfully made;  
Wonderful are Your works, And my  
soul knows it very well.”*

- Psalm 139:13-14 NASV

Beauty Is  
Skin  
Deep

Elements of Skin

# Thin Skin vs. Thick Skin



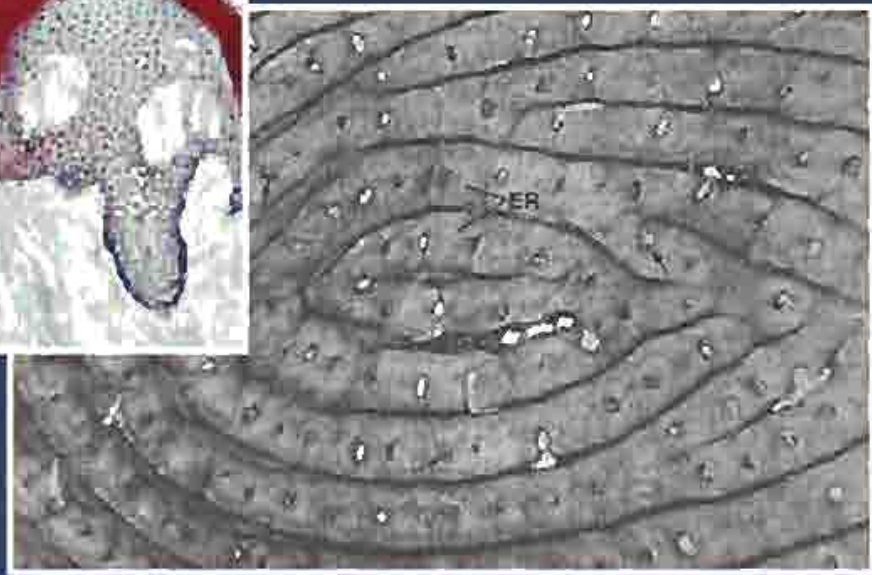
Beauty Is  
Skin  
Deep  
Elements of Skin

# Thick Skin Surface

Cristae Cutis & Rete Ridges



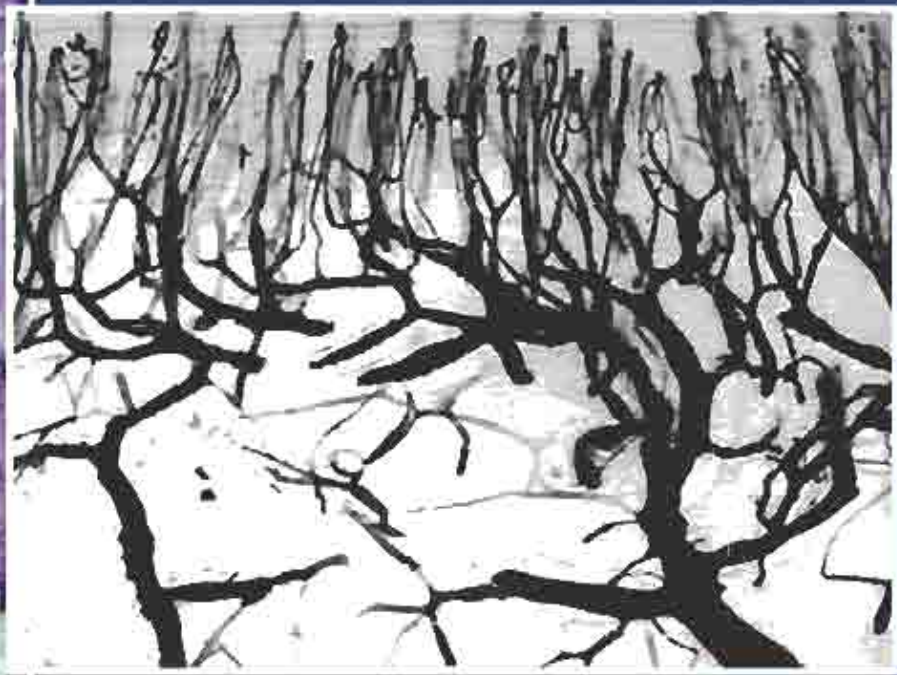
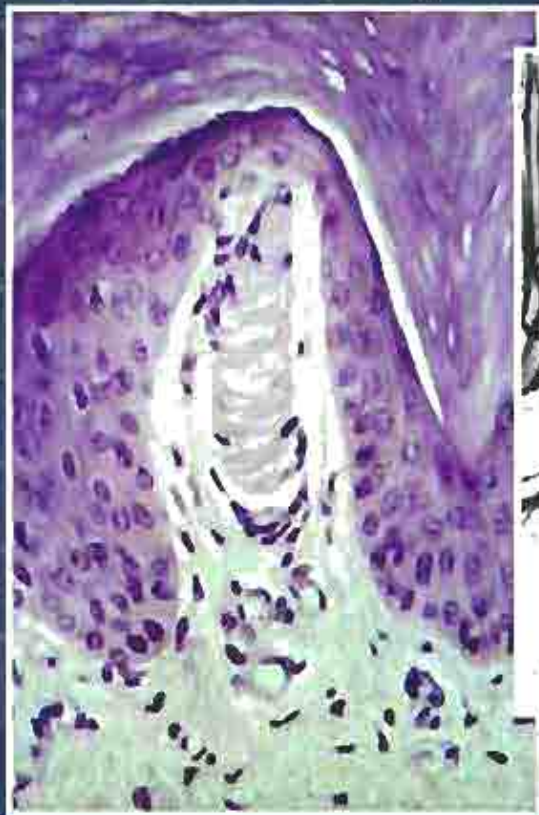
Dermatoglyphics



Beauty Is  
Skin  
Deep  
Elements of Skin

# Contents of Dermal Papillae

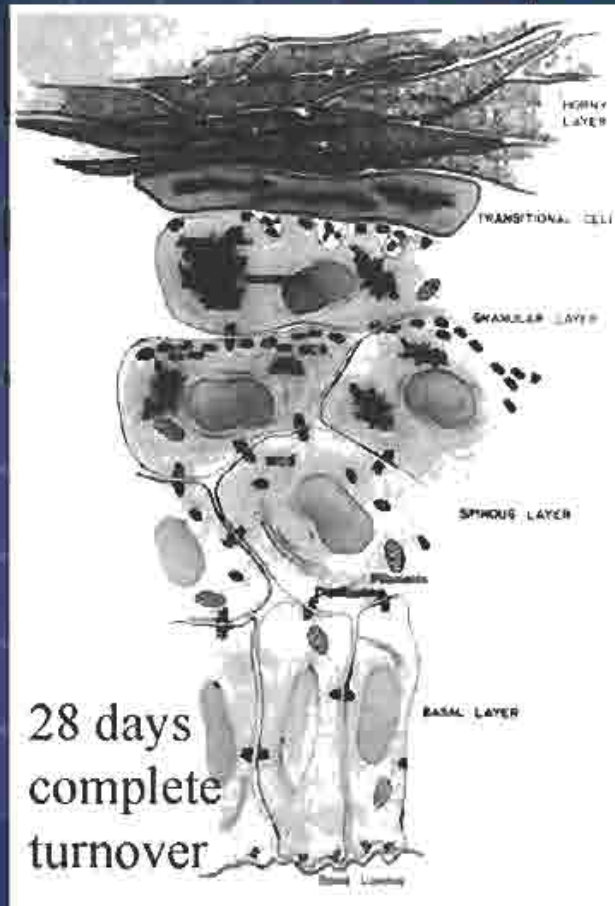
Meissner's corpuscles



Capillary loops

Beauty Is  
Skin  
Deep  
Elements of Skin

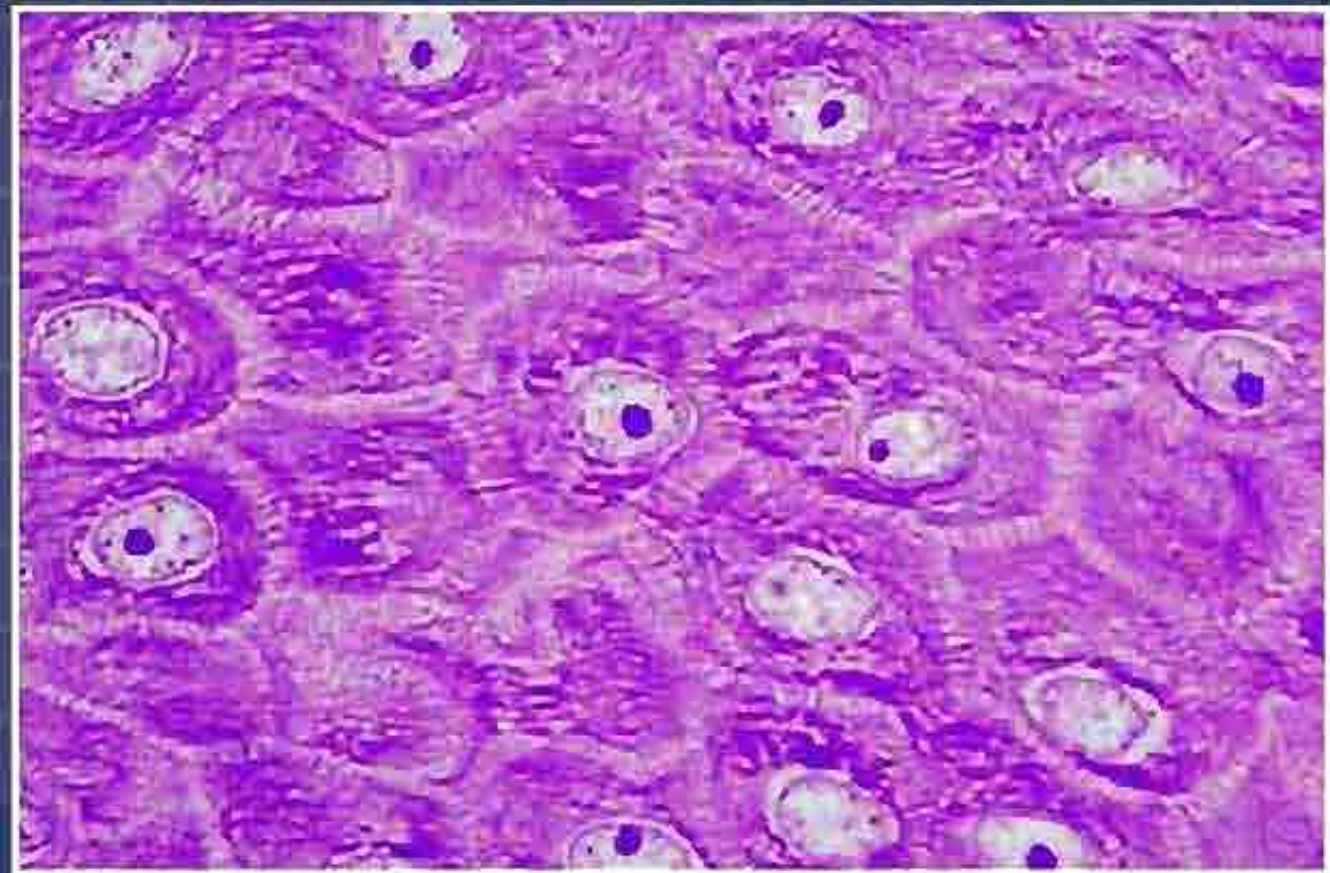
# Development of Epidermis



- ← Corneocyte ↑
- ← Cell death ↑
- ← Cells flatten ↑
- ← ↑Keratins, ↑ Cell volume ↑
- ← Cell division  
Synthesize keratins ↑

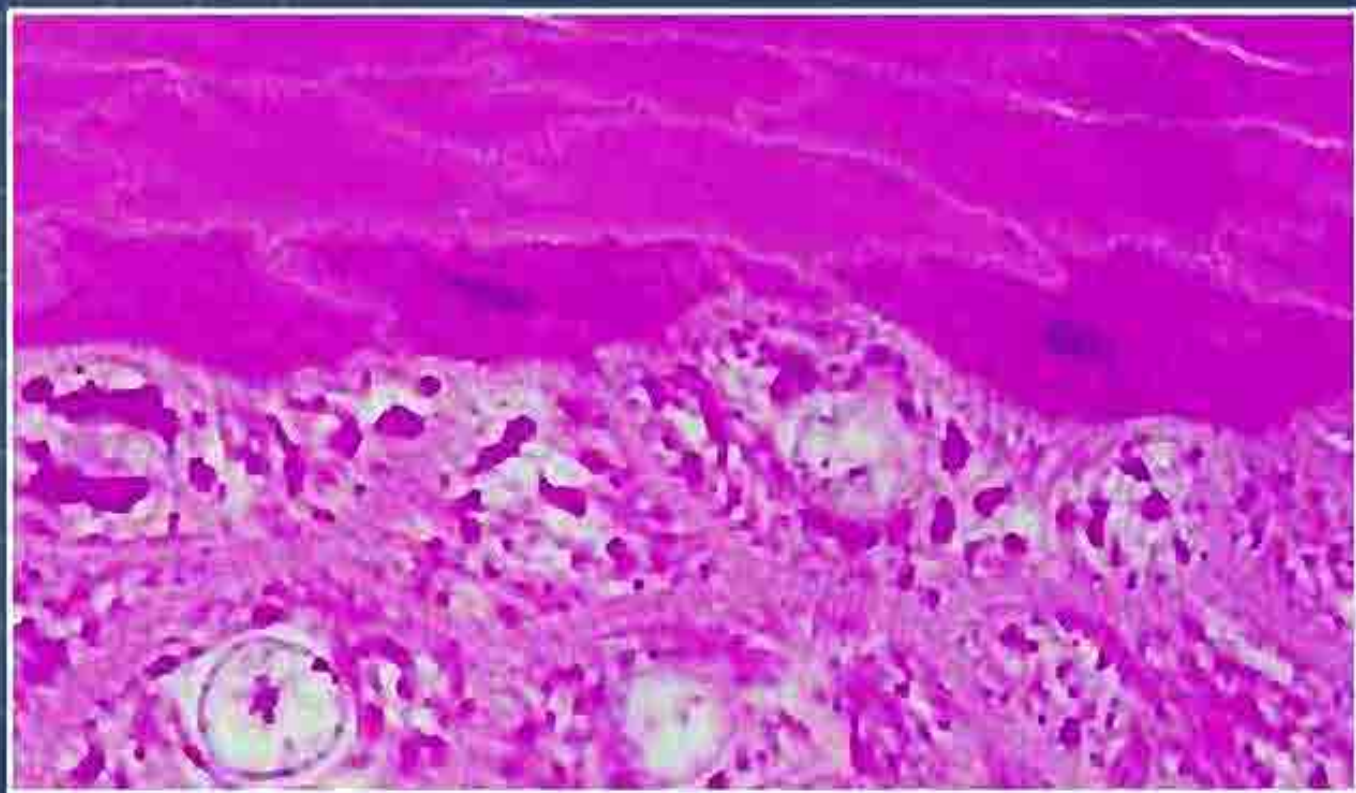
Beauty Is  
Skin  
Deep  
Elements of Skin

## Stratum Spinosum



Beauty Is  
Skin  
Deep  
Elements of Skin

# Interlocking Cells of Thick Epidermis



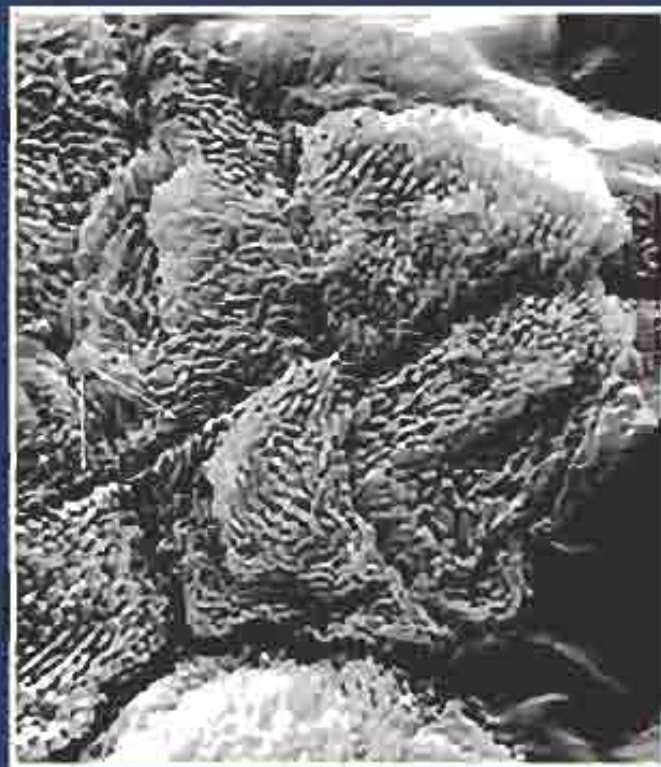
Beauty Is  
Skin  
Deep  
Elements of Skin

# Thick Skin Corneocytes

Epidermis



SEM of Corneocyte



Beauty Is  
Skin  
Deep  
Elements of Skin

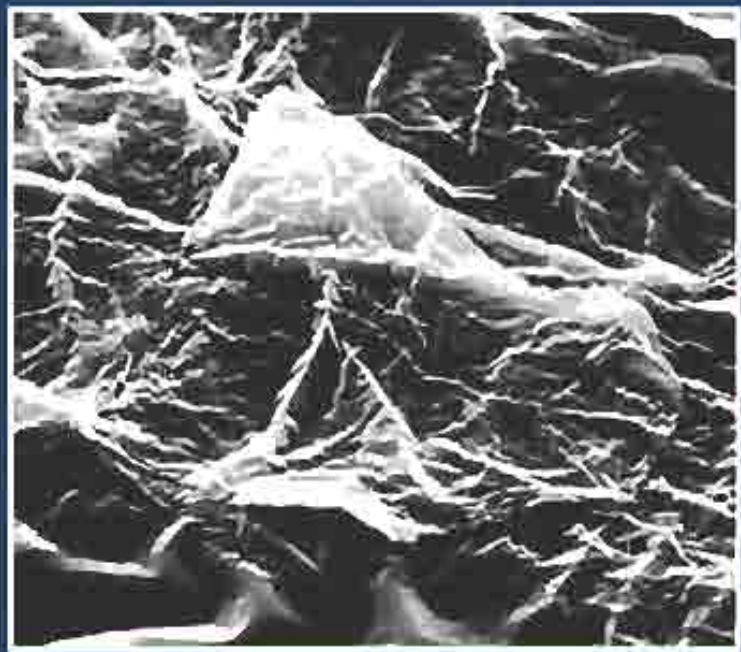


# Thin Skin Corneocytes

Cross-section of Epidermis  
& Superficial Dermis

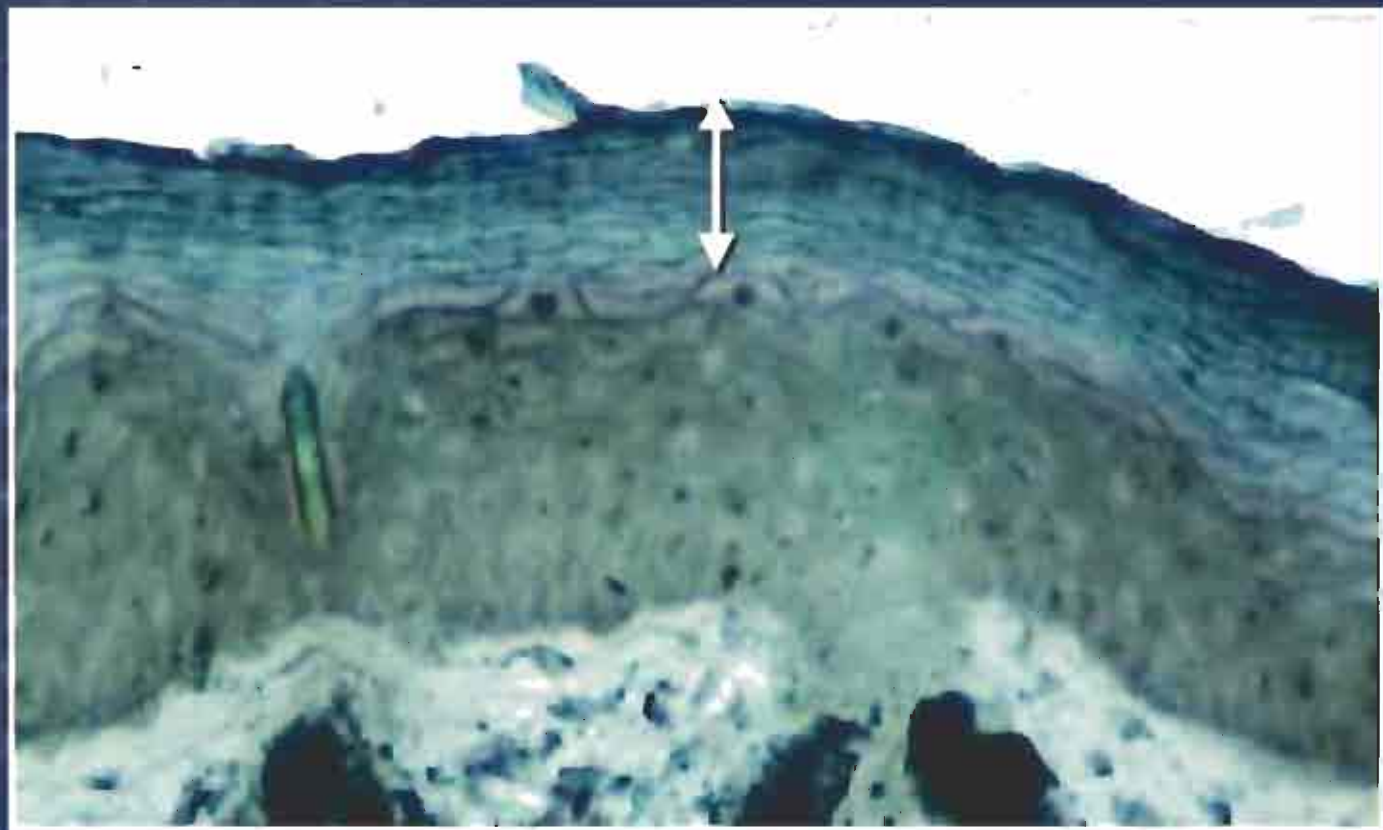


SEM of Corneocyte



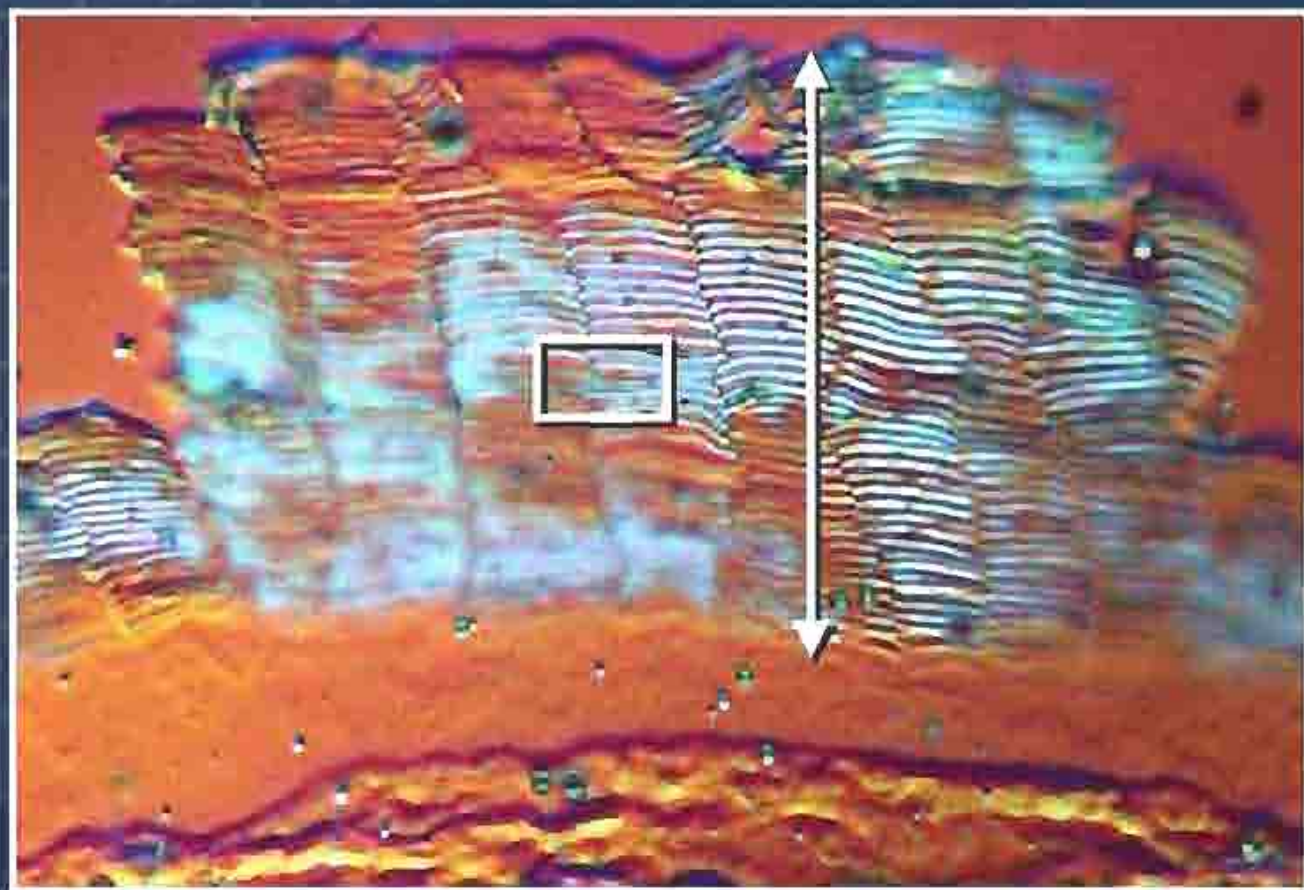
Beauty Is  
Skin  
Deep  
Elements of Skin

## Thin Skin Stratum Corneum



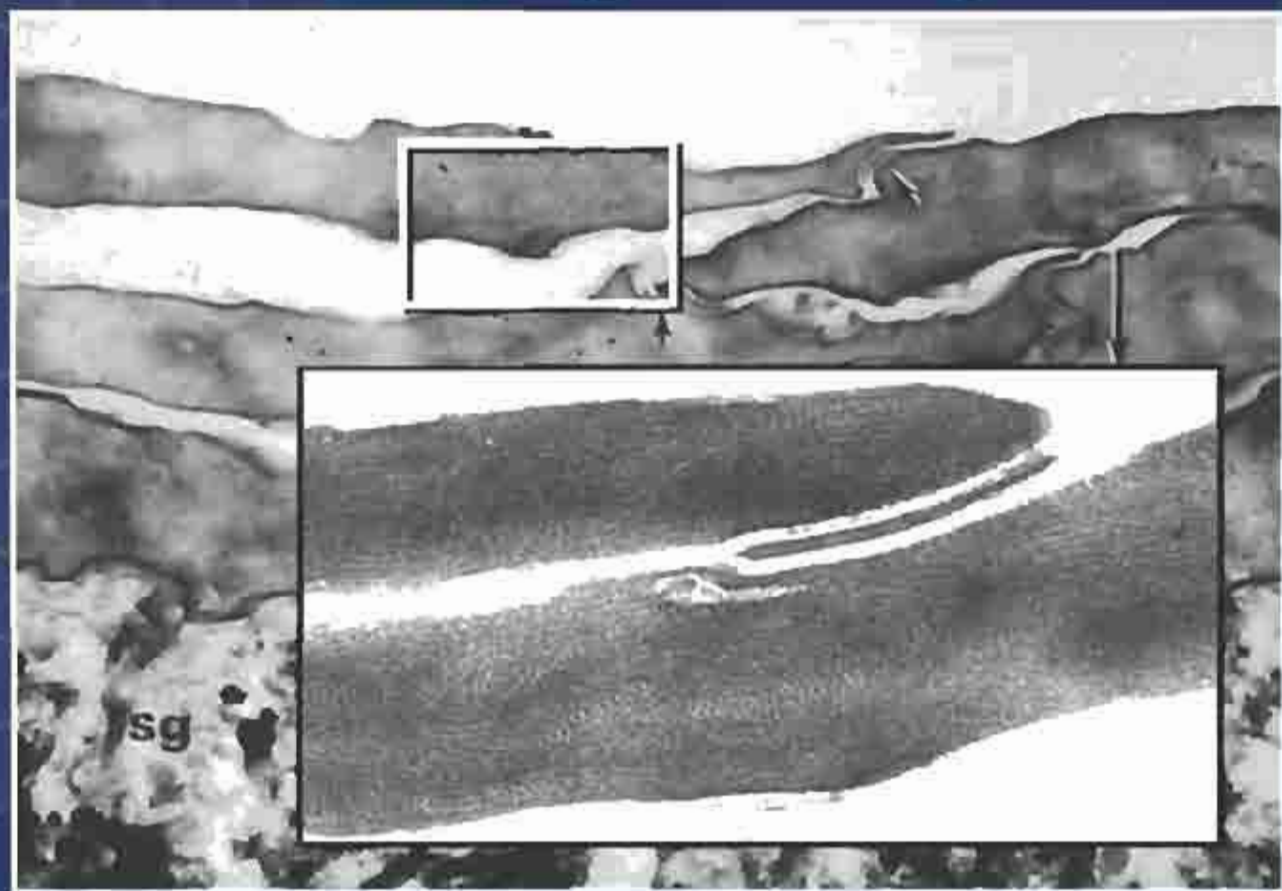
Beauty Is  
Skin  
Deep  
Elements of Skin

## Swollen Stratum Corneum



Beauty Is  
Skin  
Deep  
Elements of Skin

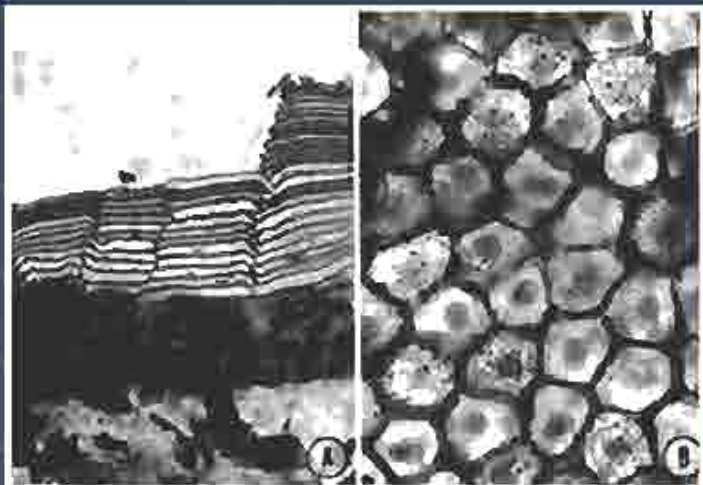
## Overlapping Corneocytes



Beauty Is  
Skin  
Deep  
Elements of Skin



Beauty Is  
Skin  
Deep  
Elements of Skin

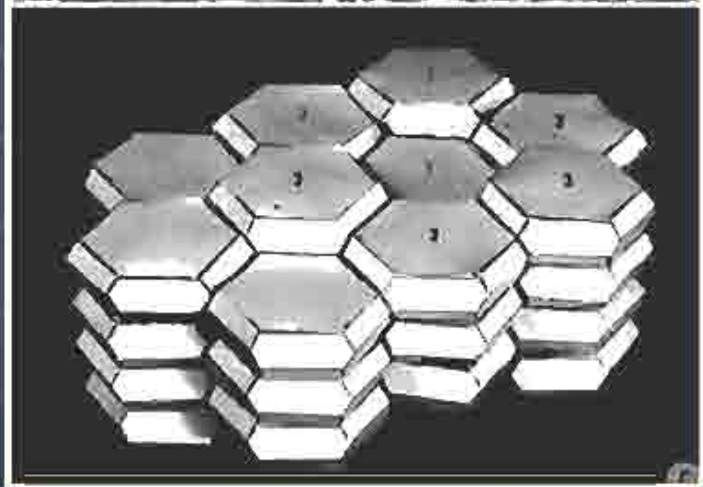


## Epidermal Cell Stacking

(A) Cross-section of the swollen epidermis

(B) Looking through the epidermis

(C) Model of epidermal cell close packing



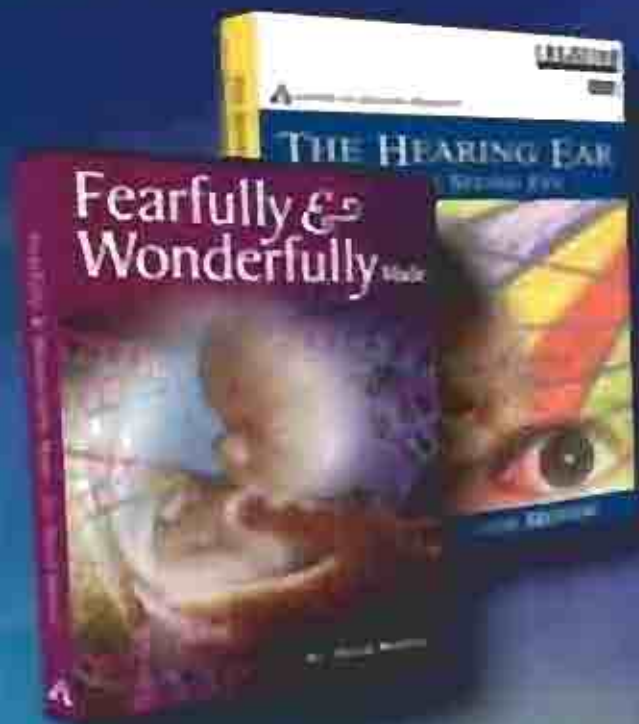


# **Man's Framework** *An Engineering Marvel!*

**The 206 bones in the human skeletal system are an engineering marvel. It is a rigid support for the body's organs & tissues, serving as a shield for the brain, lungs, heart, and spinal chord.**

**Engineers are developing lightweight structural materials, but have yet to devise a substance that grows constantly, lubricates itself, requires no shutdown time, and repairs itself routinely.**

**Is man's framework a product of random chance processes or the creation of a grand designer?**



**300-778-3390**  
DVD orders only

## ***Creation DVD Lectures***

by David Menton Ph.D.

*For more information  
about our guest write to:*

***Answers In Genesis***

***P.O. Box 510***

***Hebron, KY 41048***

[www.AnswersInGenesis.org](http://www.AnswersInGenesis.org)



*Download*

*a pdf file*



*ORIGINS prog.# 710*

*[www.originstv.org](http://www.originstv.org)*

*For a printed version write to:*

**ORIGINS Program #710**

**Cornerstone TeleVision**

**Wall, PA 15148-1499**

Send a \$5.00 donation for shipping & handling



# ORIGINS

is made possible by the faithful  
prayers and financial support of YOU  
our Cornerstone TeleVision family.

© 2007 Cornerstone TeleVision Network